

“COVID-19 RISK” SIGNAGE

Everlux has developed a range of safety signage that aims to manage behaviour in the prevention and reduction of exposure to Covid-19 risk, namely:



➤ SAFETY
PROCEDURES



➤ HYGIENE PROCEDURES,
RESPIRATORY ETIQUETTE AND
PERSONAL PROTECTION



➤ SPECIFIC EMERGENCY,
DANGER, MANDATORY AND
PROHIBITION SIGNS



➤ SIGNS FOR FLOOR APPLICATION
TO DELIMIT SPACES AND DISTANCES
WITHIN WORK ENVIRONMENTS

Safety Procedures

(mm)
150x200
200x300
300x400



↓
Available materials:
F, V and T.

Safety procedures

- Avoid contact.
- Avoid touching the face.
- Wear a mask.
- Wear gloves.
- Maintain social distancing.

©Everlux

8C 001

Safety procedures

- Wash or disinfect your hands regularly.
- Maintain social distancing.
- Cough or sneeze into your elbow or handkerchief.
- Avoid contact.
- Avoid touching your face.
- Stay home if you are unwell.

©Everlux

8C 002

How to use the hygiene mask

- Wash your hands well before putting on the mask.
- Cover your mouth, nose and chin completely.
- Replace the mask as soon as it is wet and dispose in the nearest rubbish bin.
- Wash your hands well after discarding the mask.

©Everlux

8C 003

Safety procedures

- Maintain social distancing.
- Form a single line/queue.
- Keep right.
- When coughing or sneezing cover your mouth and nose with your elbow.

©Everlux

8C 004

Safety procedures

- Maintain social distancing.
- Form a single line/queue.
- Keep left.
- When coughing or sneezing cover your mouth and nose with your elbow.

©Everlux

8C 005

Help prevent the spread of the virus

Contain

- When coughing or sneezing cover your nose and mouth with a clean tissue.

Discard

- Put used tissues in the nearest rubbish bin as soon as possible.

Eliminate

- Wash your hands immediately and clean the surfaces, prevent the spread of germs.

©Everlux

8C 006

Safety procedures

- Do not share food.
- Do not place cash on the table.
- Avoid touching the face.
- Wash or disinfect your hands before using this area.
- When coughing or sneezing, cover your mouth and nose with your elbow.

©Everlux

8C 007

Hand sanitization

Begin by removing all rings, bracelets and watches

1. Apply disinfectant or soap and water and make your hands into the shape of a cup in order to cover the entire surface.
2. Rub your palms together.
3. Rub with fingers interlaced.
4. Rub the back of your fingers against your palms.
5. Rub your thumb using your other hand. Repeat with the other thumb.
6. Rub the tips of your fingers on the palm of your other hand in a circular motion.
7. Rub each wrist with opposite hand.
8. Once dry, your hands should be clean & safe.

©Everlux

8C 008

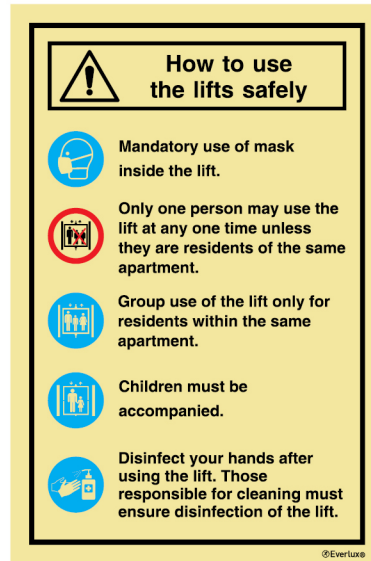
How to use the protective mask

- Wash your hands thoroughly before putting on the mask.
- Cover your mouth, nose and chin completely.
- Replace the mask as soon as it is humid.
- Wash your hands thoroughly after changing the mask.

©Everlux

8C 009

Safety Procedures



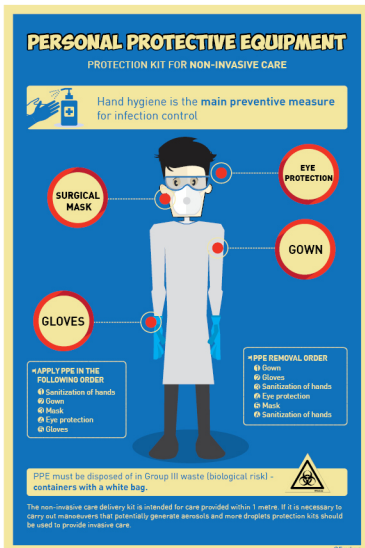
©Everlux

(mm)
150x200
200x300
300x400

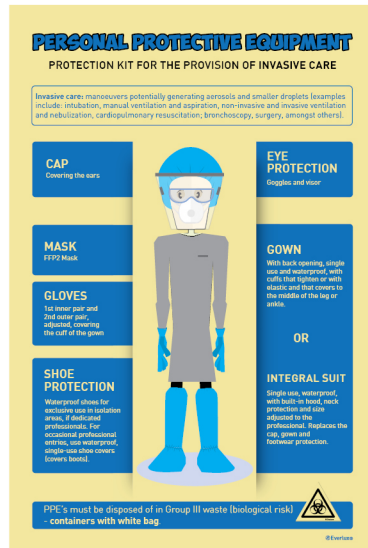
Available materials:
F, V and T.

Safety Procedures

8C 010



8C 011



8C 012



8C 013

(mm)
300x400
400x600

Available materials:
F, V and T.

Emergency



8C 021

(1)8C 022

(1)8C 023

(mm)
150x150
200x200
300x300
150x200(1)
200x300(1)
300x400(1)

Available materials:
F, V and T.

Danger



8C 031

8C 032

8C 033

(mm)
150x200
200x300
300x400

Available materials:
F, V and T.

Mandatory

(mm)
150x200
200x300
300x400



↓
Available materials:
F, V and T.

⁽¹⁾Also available in
vinyl transparent.



Prohibition

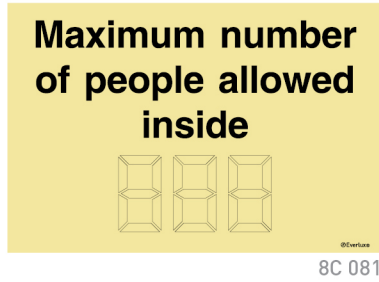
(mm)
150x200
200x300
300x400



↓
Available materials:
F, V and T.



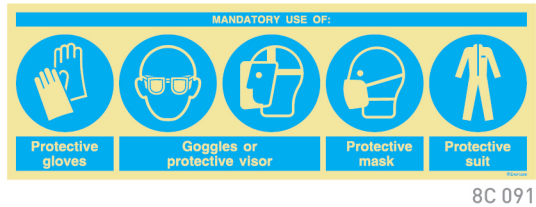
Service



(mm)
300x200
400x300
(*)300x100
(*)400x150
(*)600x200
(*)800x300

Available materials:
F, V and T.

Composite



(mm)
600x200
900x300

Available materials:
F, V and T.



(mm)
(*)200x150
(*)300x200
400x300

Available materials:
F, V and T.

(*)Also available in vinyl transparent.



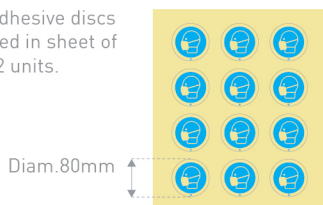
(mm)
400x300
600x400
800x600
(*)600x600
(***)800x800

Available materials:
F and T.

(***)Only available in T.

Self-adhesive vinyl Discs

Self-adhesive discs supplied in sheet of 6 or 12 units.



(mm)
Diam. 80
(*)Diam. 130

Available materials:
V e Z.

(*)Supplied by the unit.

Service

(mm)
800x300

Available materials:
VP and VB.



8C 101

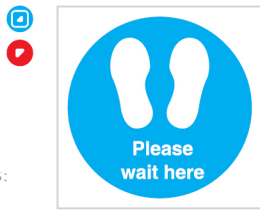


8C 102

Safety distance

(mm)
200x200
400x400
600x600

Available materials:
VP and VB.



8C 111



8C 112



8C 113



8C 114

(mm)
900x200

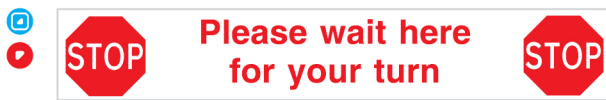
Available materials:
VP and VB.



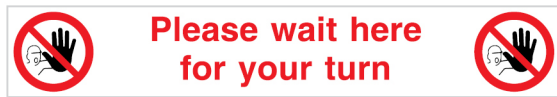
8C 121

(mm)
900x150

Available materials:
VP and VB.



8C 131



8C 132



8C 133



8C 134



8C 135

Self-adhesive discs for floor application

(mm)
Diam. 80

Available materials:
VP and VB.



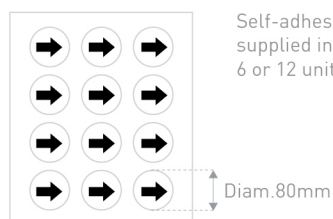
8C 141



8C 142

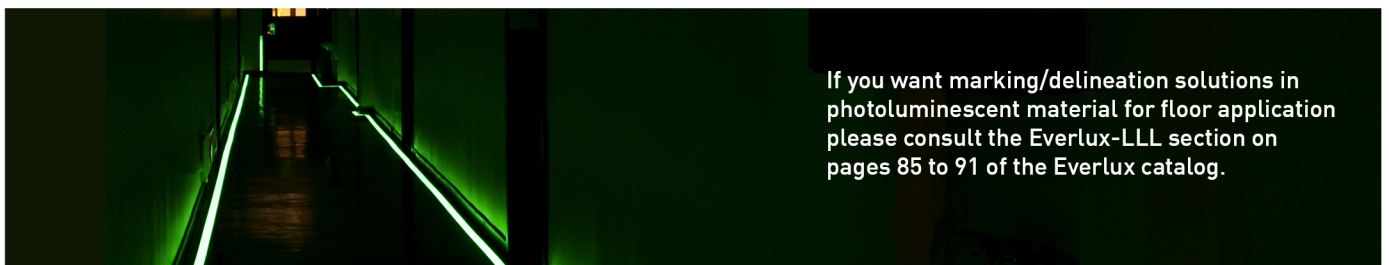


8C 143



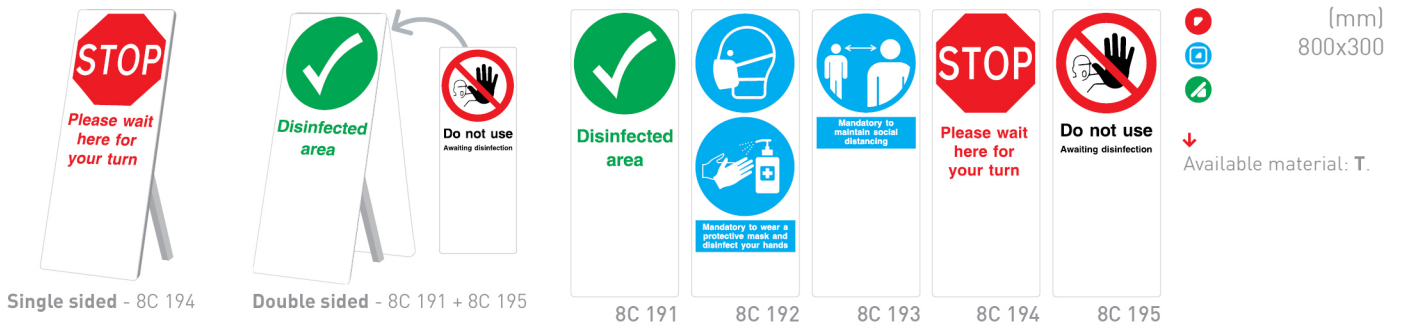
Self-adhesive discs
supplied in sheet of
6 or 12 units.

Photoluminescent marking/delineation systems for floor application



If you want marking/delineation solutions in photoluminescent material for floor application please consult the Everlux-LLL section on pages 85 to 91 of the Everlux catalog.

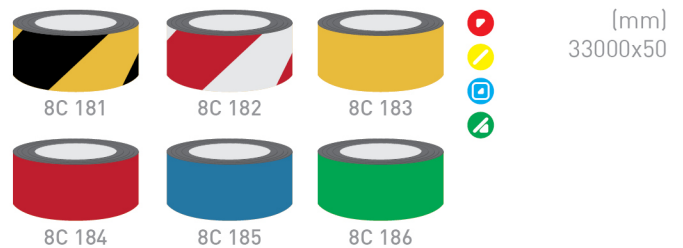
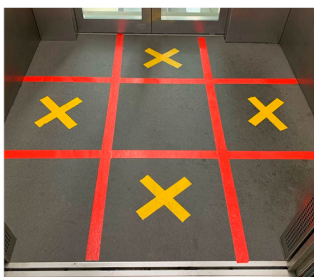
Portable signs



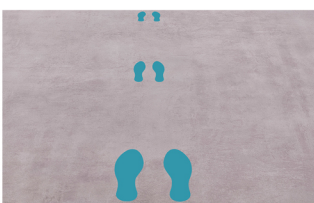
Non-slip rolls for floor application



Marking rolls for floor application



Footprint silhouettes



MATERIALS – HIGH LOCATION SIGNAGE

- **Photoluminescent PVC (F)**
High intensity photoluminescent signage in polyvinyl chloride (PVC), 2 mm thick, with anti-static surface. This product is fire resistant and self-extinguishing.
- **Opaque vinyl (V)**
Self-adhesive PVC film, 0,08mm thick, with anti-static surface and easy to clean.
- **2 mm thick composite aluminum (T)**
Material composed of two 0.25mm thick aluminium layers and a polyethylene interior. Light, resistant and with anti-static surface.
- **Self-adhesive photoluminescent vinyl (Z)**
0.39mm thick self-adhesive photoluminescent vinyl, antistatic surface and easy to clean.

MATERIALS – FLOOR LOCATION SIGNAGE

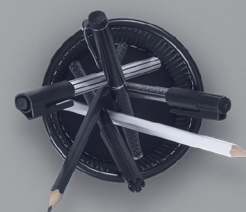
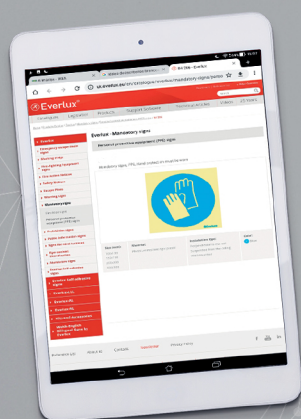
- **Non-slip vinyl for floor (VP)**
Material composed of a self-adhesive PVC film, 0,08mm thick, coated with a transparent non-slip protection film, in monomeric calandered PVC. The total thickness of the product after application is 0,3mm.
- Slip resistance is characterized by the coefficient of static and dynamic friction:

Dynamic friction coefficient (ANSI A 137.1:2012)	
Humid	0,236
Static friction coefficient (ANSI B 101.1:2009)	
Humid	0,452

- **Opaque vinyl for floor (VB)**
Self-adhesive PVC film signage, for temporary use, 0,08mm thick and with anti-static surface.

DIGITAL CATALOGUE

 Everlux®



Consult at www.everlux.eu